



The works of **Silvia Rebel**
at Abacus



ABOUT THE ARTIST

S

ilvia Ester Rebel spent her childhood in Witbank, a Highveld town where grasslands stretch into eternity and trees are few.

She completed a National Diploma in Graphic Design in 1987. Nowadays she has an art school for kids, illustrates books and is mother of two.

The Latin name: “Silvia” means, forest maiden, therefore her work depicts her love for trees, especially huge upright trees which compel you to look up and realize the expansiveness of the heavens above.

For Abacus, a recruitment company that you would approach when crossroad decisions in life occur, this artist used trees as wooden symbols that identify the cross of Calvary. She uses mixed mediums, as medium is just a tool of expression – only a messenger; to bring Him all the glory – the Creator – from whom all creativity flows.



“CROSS ROAD”

T

he latin for “Silvia” means wood or forest. Therefore the artist used a personal comparison of a tree symbolizing the crossroads of life. This work of art is composed of fragments that visually link to the formal structure of a cross.

Mankind is depicted as a dry leaf on an

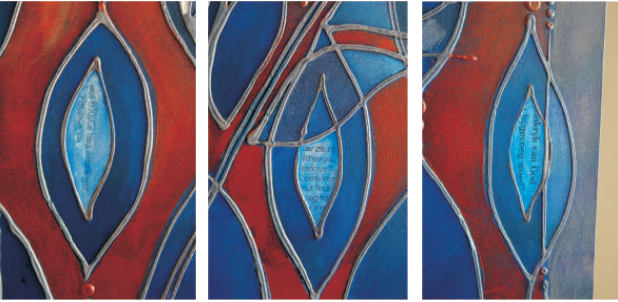
age old pathway, that when interactively crosses the tree, becomes a seed. This tree is rooted in a timeless scarlet rock, referring to the blood of Jesus Christ.



“FLOURISHING INTIMACY”

B

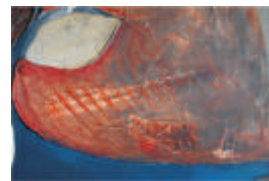
looming intimacy occurs when the leaf becomes a seed that allows the germination wonder of growth to become part of its pathway on earth. A warmth from within that effects fellow pilgrims.



“GERMINATION OF SEEDS”

T

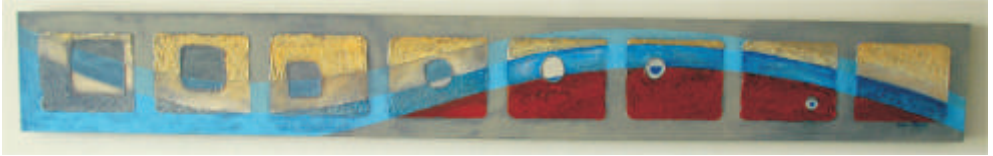
This microscopic germination wonder is given perspective over the decades of time, only when it is personalised. Then I see myself in the mirror, and become part of the process. A distant landscape with 3 dimensions of reality.



“JOURNEY”

A

s in the forming of a precious pearl, this work deals with the journey. A self justifying silver block changes to a silver pearl, under the workmanship of the Holy Spirit.



“MECHANICAL FARMER”

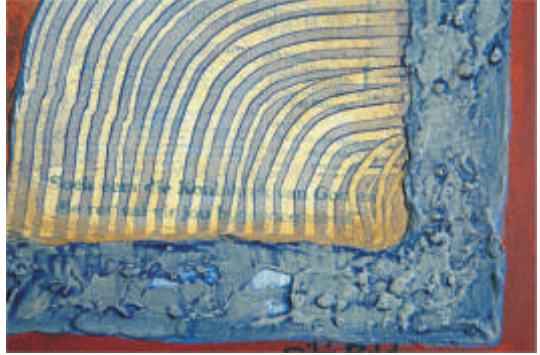
A

n orchestration of farming activities made practical by mechanical precision. With outspread vision over all the ages: Christ stays the centre! Yesterday, today and for ever more.

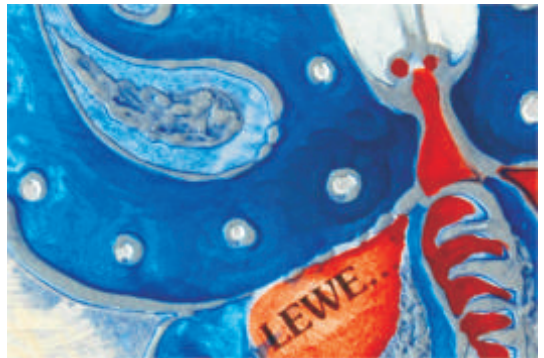


“METAMORPHOSIS OF LIFE”

In our lifetime living here on earth, we all find ourselves somewhere within the process of metamorphosis. Whether it be in dealing with physical needs, spiritual growth or struggling with moral issues. As long as the sun shines; metamorphosis continues....



"METAMORPHOSIS OF LIFE"





“RUN OF THE MILL”

Similar to the process of “Heiligmaking” We find ourselves confronted with a life time of refining as human beings. A run in the mill of life which starts with our first gasp of breath – and ends with the last.



“SUBTLE STRENGTH”

H

armonious sounds of singing colours fill our face value of this work. Yet below the obvious, we smell the sweet scent of her subtle strength. A dynamic force connected to the creativity of God.



“DESTINY”

O

ur final destiny or goal in life is often obscured by short sighted, temporary circumstances that are real today. Yet we are reminded to keep focus on the things to come...

